



**NuLeaf**  
F a r m s

# COMMUNITY FOOD SECURITY ASSESSMENT

Presented by **NuLeaf Farms Inc.**

**NuLeaf Farms Inc.**  
[www.NuLeafFarms.ca](http://www.NuLeafFarms.ca)

**Confidential**

# Table Of Contents

02	<b>Introduction</b>
03	<b>Agriculture, Food Security &amp; Food Sovereignty</b>
04	<b>The Six Pillars of Food Sovereignty</b>
05	<b>Objectives of Assessment</b>
06	<b>What is covered in this assessment?</b>
08	<b>Community Food Security Report</b>
11	<b>Consulting Deliverables and Rates</b>
12	<b>Payment Milestones</b>
12	<b>Assumptions</b>
13	<b>About NuLeaf Farms Inc.</b>



# Introduction

## Growing a Legacy of Sustainable Farmers for a Sustainable Future.



### Food Security

Steady supply,  
Reduced dependency



### Building Resilience

Economic  
development



### Innovative Farming

Tailored solutions,  
Sustainable practices.



**Cultivate communities by empowering the next generation of farmers with the knowledge, technology, and skills they need to succeed.**

# Agriculture, Food Security & Food Sovereignty

Agriculture can provide communities with opportunities for jobs, training, and help support food security and food sovereignty. All of these contribute to positive outcomes in communities.

**Food security** refers to the consistent availability and accessibility of sufficient, safe, and nutritious food for a healthy life. It's a broad concept involving the stability of food supply, access, affordability, and utilization. Food security also considers the quantity and quality of food to meet dietary needs.

**The United Nations Food and Agriculture organization** define the state of food security as follows: *"Food security exists when all people, at all times, have physical and economic access to sufficient, safe and nutritious food to meet their dietary needs and food preferences in order to lead a healthy and active life."*

This definition gives greater emphasis to the multidimensional nature of food security and includes: "the availability of food, access to food, biological utilization of food, and stability [of the other three dimensions over time].

"Without the right to food one cannot guarantee life, dignity or the enjoyment of other human rights."

**Food sovereignty** is the right of people to define their own food systems, prioritizing food production closer to consumption and availability of traditional and culturally important food sources. It emphasizes sustainable agriculture, local autonomy, and finds alternatives to globally dominated and supply chain dependent food systems.



This document contains confidential and/or proprietary information and is provided for the use of the intended recipient only. Any reproduction, distribution retransmission or dissemination of this information by anyone other than the intended recipient requires written consent from the board of directors of NuLeaf Farms Inc.

# The Six Pillars of Food Sovereignty



## 1. Food for the people by the people

- a) People's needs should be at the center of policies
- b) food is more than just a commodity



## 2. Food providers have value

- a) supporting sustainable livelihoods
- b) respecting the work of food providers



## 3. Localizing food systems

- a) bringing suppliers closer to consumers
- b) focusing on appropriate food aid and reducing waste
- c) reduced dependence on remote and unaccountable corporations



## 4. Make control local

- a) control in the hands of local food suppliers
- b) recognizing the need to inhabit and share territories
- c) rejecting the privatization of natural resources



## 5. Promotes knowledge and skills

- a) leverage traditional knowledge
- b) support and pass on this knowledge to future generations
- c) rejecting technologies that undermine local food systems



## 6. Works with nature

- a) maximizing the contributions of ecosystems
- b) improve resilience
- c) rejecting ...destructive production methods

This document contains confidential and/or proprietary information and is provided for the use of the intended recipient only. Any reproduction, distribution retransmission or dissemination of this information by anyone other than the intended recipient requires written consent from the board of directors of NuLeaf Farms Inc.



# Objectives of Assessment

- Help community food security and sovereignty and support community participation in the agriculture and food sector.
- Understand the potential to create opportunities for rural employment, training, skills development, in community, in the agriculture and food sector.
- Support economic diversification and equity in agriculture and help developing opportunities for rural and remote communities.
- Demonstrate the potential of technology to support agriculture and food systems and create economic opportunities.
- Support food sovereignty, traditional knowledge, application of traditional knowledge and growing to food and agriculture systems.
- Support traditions and relationships between communities, their environments and food.



This document contains confidential and/or proprietary information and is provided for the use of the intended recipient only. Any reproduction, distribution retransmission or dissemination of this information by anyone other than the intended recipient requires written consent from the board of directors of NuLeaf Farms Inc.

# What is Covered in this Assessment?

A well implemented agriculture program can help with issues of food security and sovereignty.

Food security refers to the consistent availability and accessibility of sufficient, safe, and nutritious food for a healthy life. It's a broad concept involving the stability of food supply, access, affordability, and utilization. Food security also considers the quantity and quality of food to meet dietary needs.

This assessment will analyze the current state of agriculture and food security in the community as well as the potential and requirements for a successful agriculture project. Our approach will review various aspects that directly or indirectly affect food security and related risks in the context of community agriculture programs. We will work to determine possible approaches to improving food security through farming approaches such as indoor farms, greenhouses or other controlled environments. Every community is unique, and it is important to understand food in the context of the community's specific requirements and objectives.

For sovereignty is important for health and cultural aspects of community life. While immediate food security issues may have acute and direct risks, food's central role in community culture will be affected by food sovereignty considerations and our assessment will incorporate community inputs into food and crop choices.



This document contains confidential and/or proprietary information and is provided for the use of the intended recipient only. Any reproduction, distribution retransmission or dissemination of this information by anyone other than the intended recipient requires written consent from the board of directors of NuLeaf Farms Inc.



Food is at the center of many cultural and historical practices, it provides opportunities for exchanges between generations, and serves as part of an identity framework. These cultural factors have important implications for physical and mental health and are important to long term community health outcomes.

A community agriculture program can help address various issues such as food security, food sovereignty, economic opportunities, training and skills development. Thus, critical to any program is an understanding of the community goals in these areas.





# Community Food Security Report



## Community Food Security Status

- Evaluate the current state of food security within the community. Explore and implement initiatives that address the root causes of food insecurity.
- Analyze demographic data to understand the impact on various population segments.
- Define the Quality, pricing and availability of current current supply chain.
- Identify and define opportunities to improve Food Security (education, food bank, Community Agriculture Progressed).
- Define potential economic development models that further aid in food security

## Economic Development Opportunity



- **CSA (Community Supported Agriculture):** Evaluate the potential for establishing CSA programs.
- **Wholesale:** Assess opportunities for wholesale distribution.
- **Retail:** Analyze the feasibility of retail sales channels.
- **Value-Added Products:** Explore possibilities for producing and marketing value-added products.
- **Animal Feed:** Investigate the use of crops for animal feed.
- **Reclamation:** Consider land reclamation projects for sustainable agriculture.
- **Agricultural Processing:** Assess the need for and benefits of local agricultural processing facilities.
- **Demographics Analysis:** Conduct a comprehensive analysis of community demographics.
- **Other Businesses in the Area:** Identify and analyze other agricultural businesses in the area.
- **Pricing Models:** Develop competitive and sustainable pricing models.
- **Volumes:** Estimate potential production and sales volumes.
- **Distribution:** Plan efficient distribution strategies to reach target markets.

**This will require client to provide all detailed drawing (layouts, electrical, mechanical) of existing spaces. Travel to site will have additional costs (time, travel and accommodations)**

This document contains confidential and/or proprietary information and is provided for the use of the intended recipient only. Any reproduction, distribution retransmission or dissemination of this information by anyone other than the intended recipient requires written consent from the board of directors of NuLeaf Farms Inc.

# Community Food Security Report

## Existing Infrastructure

- Review existing vs new buildings (greenhouse or indoor).
- Assess power, water, internet, etc.
- Labour potential
- Skills gap in labour
- Training requirements



## Identify Target Crops

- Which crops are best suited to meet community objectives.
- Food security/sovereignty vs market opportunities.



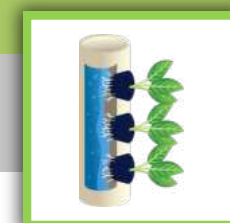
## Determine the Appropriate Type of Farms and Grow Systems

- Evaluate grow system for applicability for the community.
- Considerations of containers, modular structures, greenhouses or retrofits.



## Preliminary Facility Design

- Farm size, layout, growing systems, Nutrient delivery and handling areas if applicable.



This document contains confidential and/or proprietary information and is provided for the use of the intended recipient only. Any reproduction, distribution retransmission or dissemination of this information by anyone other than the intended recipient requires written consent from the board of directors of NuLeaf Farms Inc.



## Project Costing and delivery schedule

- Include a budget and proposal, if applicable, additional recommendations.
- Project schedule and logistics.



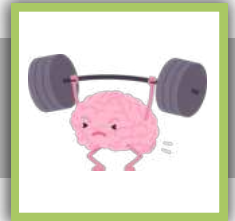
## Identify Local Champion in Community to Operate Facilities

- Engage local champion in project.
- Share knowledge during feasibility study.
- Coordinate site requirements and project updates.



## Assess Existing Skill Sets and Determine What Type of Training is Required to Operate Facilities

- Agriculture/ growing skills assessment.
- Identification of training programs and approaches.
- Discussion of agricultural training program.



## Development of Proforma Financial Statements

- Demonstrate expected financial performance of the farm, including operating costs based on communities desired operating model.



## Provide detailed report to Chief and Council

- Submit and review final report to Chief and counsel.
- Develop execution plan, sources of funding and next steps.



This document contains confidential and/or proprietary information and is provided for the use of the intended recipient only. Any reproduction, distribution retransmission or dissemination of this information by anyone other than the intended recipient requires written consent from the board of directors of NuLeaf Farms Inc.

# Deliverables

## Community Food Security Report

- Community Food Security Status
- Economic Development Opportunity
- Existing Infrastructure
- Identify Target Crops
- Determine the appropriate type of farms and grow systems
- Preliminary facility design
- Project Costing and delivery schedule
- Identify local champion in community to operate facilities
- Development of proforma financial statements
- Provide detailed report to Chief and Council



This document contains confidential and/or proprietary information and is provided for the use of the intended recipient only. Any reproduction, distribution retransmission or dissemination of this information by anyone other than the intended recipient requires written consent from the board of directors of NuLeaf Farms Inc.



# Payment Milestones & Assumptions

## Payment Milestones



- Kick off – **50%**
- Completion of Site Visit / audit – **25%**
- Submission of final report – **25%**

## Assumptions

Cost estimate is in Canadian Dollars and does not include contingencies. Cost estimate for project is subject to change depending on scope changes which will be detailed and reviewed with the client upon the completion of the field visit and further understanding of the project design. Any such changes will be reviewed and mutually agreed. Budget is based on one site visit to be accomplished in a period of one week. Extension of visit may require adjustment.

NuLeaf Farms Inc. Terms and Conditions apply.



# About NuLeaf Farms

At **NuLeaf Farms**, we're growing the next generation of farmers. Combining plant science and technology, we work extensively with communities to understand their needs and support indoor farming objectives that can **bring economic development and food security**.

From our state-of-the-art facility in Calgary, Alberta, we provide indoor farming solutions tailored to **grow affordable, fresh produce all year round**. Helping customers grow their own nutritious food on site while saving over 50% of the cost of food and saving up to 95% less water and land, food waste, pesticides and transportation used in traditional supply chains. With post project support through training and support programs and onsite training, **NuLeaf Farms takes every customer from seed to success**.



Working with communities to grow a sustainable and secure food future.



Reduce the financial and environmental costs of food.



Delivering all-in-one indoor hydroponic farms



Growing fresh, nutritious food year-round with a fraction of the natural resources.



## Contact – Ryan Wright



403-899-4218



[Ryan.Wright@NuLeafFarms.ca](mailto:Ryan.Wright@NuLeafFarms.ca)



8030-11500 35 Street SE,  
Calgary, AB



[www.NuLeafFarms.ca](http://www.NuLeafFarms.ca)

This document contains confidential and/or proprietary information and is provided for the use of the intended recipient only. Any reproduction, distribution retransmission or dissemination of this information by anyone other than the intended recipient requires written consent from the board of directors of NuLeaf Farms Inc.